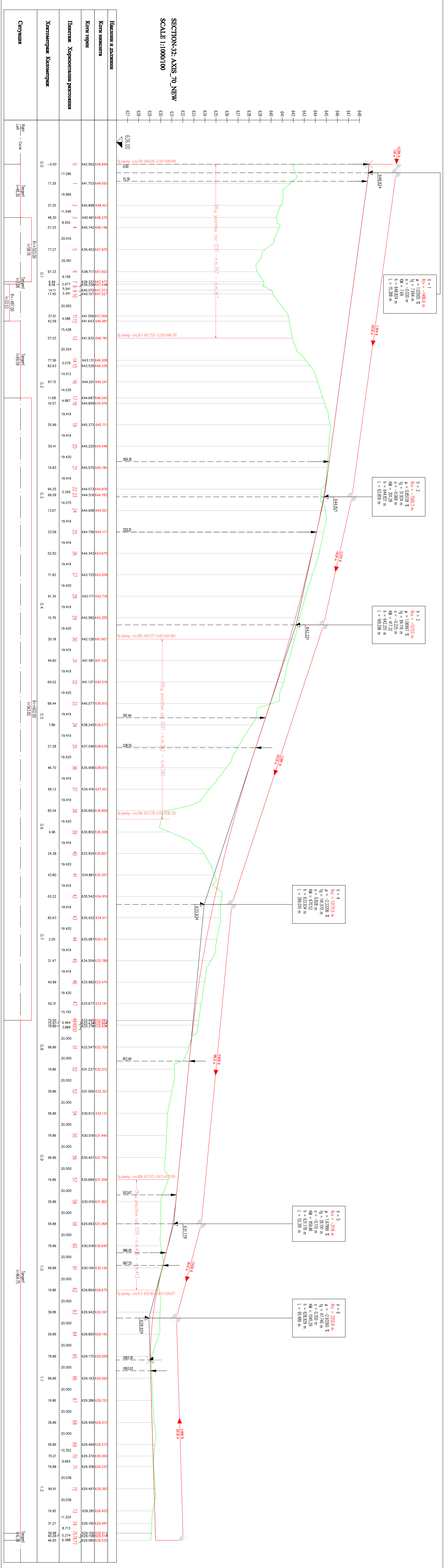


SECTION-32: AXIS_70_NEW
SCALE 1:1000/100



Наименование	Котировка	Длина	Котировка
1	194.296	17.28	194.296
2	194.427	37.25	194.427
3	194.270	48.30	194.270
4	194.149	57.25	194.149
5	194.785	77.27	194.785
6	194.602	97.33	194.602
7	194.474	117.40	194.474
8	194.353	137.47	194.353
9	194.232	157.54	194.232
10	194.111	177.61	194.111
11	194.090	197.68	194.090
12	194.069	217.75	194.069
13	194.048	237.82	194.048
14	194.027	257.89	194.027
15	194.006	277.96	194.006
16	193.985	298.03	193.985
17	193.964	318.10	193.964
18	193.943	338.17	193.943
19	193.922	358.24	193.922
20	193.901	378.31	193.901
21	193.880	398.38	193.880
22	193.859	418.45	193.859
23	193.838	438.52	193.838
24	193.817	458.59	193.817
25	193.796	478.66	193.796
26	193.775	498.73	193.775
27	193.754	518.80	193.754
28	193.733	538.87	193.733
29	193.712	558.94	193.712
30	193.691	579.01	193.691
31	193.670	599.08	193.670
32	193.649	619.15	193.649
33	193.628	639.22	193.628
34	193.607	659.29	193.607
35	193.586	679.36	193.586
36	193.565	699.43	193.565
37	193.544	719.50	193.544
38	193.523	739.57	193.523
39	193.502	759.64	193.502
40	193.481	779.71	193.481
41	193.460	799.78	193.460
42	193.439	819.85	193.439
43	193.418	839.92	193.418
44	193.397	859.99	193.397
45	193.376	880.06	193.376
46	193.355	900.13	193.355
47	193.334	920.20	193.334
48	193.313	940.27	193.313
49	193.292	960.34	193.292
50	193.271	980.41	193.271
51	193.250	1000.48	193.250
52	193.229	1020.55	193.229
53	193.208	1040.62	193.208
54	193.187	1060.69	193.187
55	193.166	1080.76	193.166
56	193.145	1100.83	193.145
57	193.124	1120.90	193.124
58	193.103	1140.97	193.103
59	193.082	1161.04	193.082
60	193.061	1181.11	193.061
61	193.040	1201.18	193.040
62	193.019	1221.25	193.019
63	192.998	1241.32	192.998
64	192.977	1261.39	192.977
65	192.956	1281.46	192.956
66	192.935	1301.53	192.935
67	192.914	1321.60	192.914
68	192.893	1341.67	192.893
69	192.872	1361.74	192.872
70	192.851	1381.81	192.851
71	192.830	1401.88	192.830
72	192.809	1421.95	192.809
73	192.788	1442.02	192.788
74	192.767	1462.09	192.767
75	192.746	1482.16	192.746
76	192.725	1502.23	192.725
77	192.704	1522.30	192.704
78	192.683	1542.37	192.683
79	192.662	1562.44	192.662
80	192.641	1582.51	192.641
81	192.620	1602.58	192.620
82	192.599	1622.65	192.599
83	192.578	1642.72	192.578
84	192.557	1662.79	192.557
85	192.536	1682.86	192.536
86	192.515	1702.93	192.515
87	192.494	1723.00	192.494
88	192.473	1743.07	192.473
89	192.452	1763.14	192.452
90	192.431	1783.21	192.431
91	192.410	1803.28	192.410
92	192.389	1823.35	192.389
93	192.368	1843.42	192.368
94	192.347	1863.49	192.347
95	192.326	1883.56	192.326
96	192.305	1903.63	192.305
97	192.284	1923.70	192.284
98	192.263	1943.77	192.263
99	192.242	1963.84	192.242
100	192.221	1983.91	192.221